







# Cardini

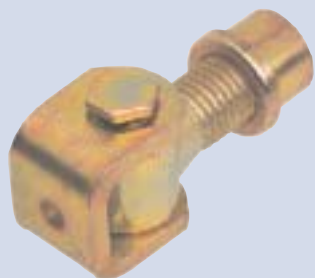
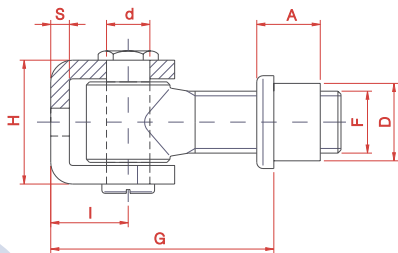




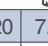
-  Hinges
-  Torbänder
-  Gonds
-  Pernios







## Cardine a saldare

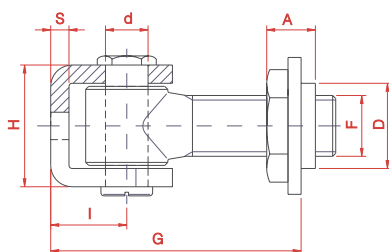
-  Hinge to be welded
-  Anschweißband
-  Gond à souder
-  Pernio para soldar



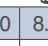


ARTICOLO - ARTICLE		D	d	F	G min/max	I	H	S	A			€	
Riferimento-Reference		∅		UNI	mm					N°		kg	x1
C 20	CT 00 20 S0	25	14	M 20	51-70	24	39	5	20,5	20	7.9	4,20	
C 24	CT 00 24 S0	29	17	M 24	57-76	28	48	6	25,5	10	6.9	5,60	
Inox	C 20 I	25	14	M 20	51-70	24	39	5	20,5	20	7.8	20,30	





## Cardine a saldare registrabile

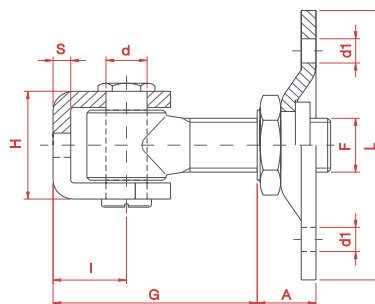
-  Adjustable weld - on hinge
-  Einstellbares Anschweißband
-  Gond réglable à souder
-  Pernio para soldar regulable



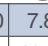


ARTICOLO - ARTICLE		D	d	F	G min/max	I	H	S	A			€	
Riferimento-Reference		∅		UNI	mm					N°		kg	x1
CR 20	CT 00 20 R0	28	14	M 20	57-80	24	39	5	16	20	8.5	5,60	
CR 24	CT 00 24 R0	34	17	M 24	65-90	28	48	6	19	10	7.2	6,90	





## Cardine registrabile con piastra

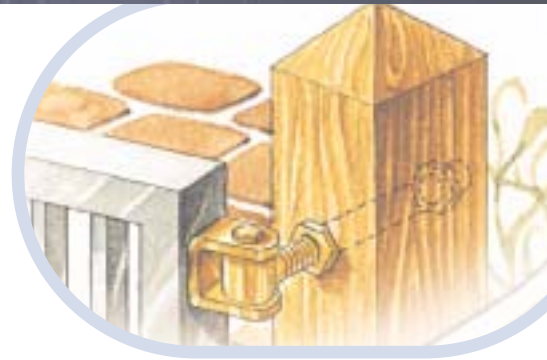
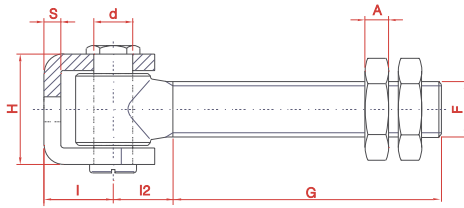
-  Adjustable hinge with plate
-  Einstellbares Torband mit Platte
-  Gond réglable avec plaque
-  Pernio regulable con placa




ARTICOLO - ARTICLE		L	d	F	G min/max	I	H	S	A	d1			€
Riferimento-Reference		□	∅	UNI	mm				∅	N°		kg	x1
CR 20 P	CT 00 20 RP	100	14	M 20	46-76	24	39	5	20	9	10	7.8	8,50
CR 24 P	CT 00 24 RP	120	17	M 24	52-76	28	48	6	20	11	10	13.5	10,90





## Cardine con barra lunga

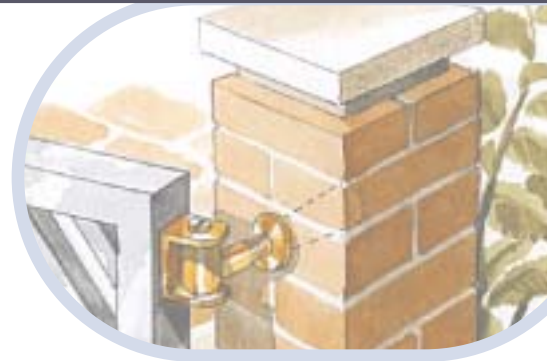
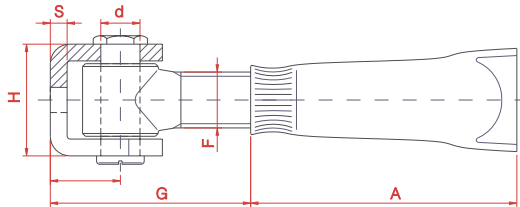
-  Hinge with longer bar
-  Anschweißband mit Gewinde - Bolzen
-  Gond avec barre plus longue
-  Pernio con barra larga






ARTICOLO - ARTICLE		d	F	G	I	I2	H	S	A			€
Riferimento-Reference		∅	UNI	mm						N°		x1
CL 20	CT 00 20 L0	14	M 20	145	24	20	39	5	8	10	6.4	7,50
CL 24	CT 00 24 L0	17	M 24	142	28	23	48	6	10	10	9.9	8,60





## Cardine a muro

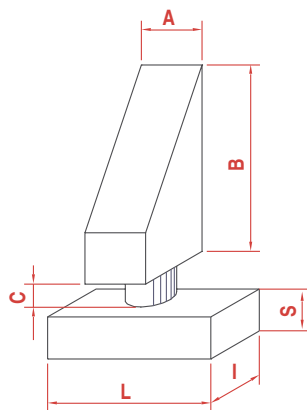
-  Wall-hinge
-  Anschweißband mit Mauerhülse
-  Gond mural
-  Pernio para empotrar






ARTICOLO - ARTICLE		d	F	G	I	H	S	A			€
Riferimento-Reference		∅	UNI	min/max	mm			N°		x1	
CM 20	CT 00 20 M0	14	M 20	46-70	24	39	5	95	20	9.5	5,00
CM 24	CT 00 24 M0	17	M 24	52-76	28	48	6	100	10	8.1	8,70





## Piastra e perno per cancelli ad ante

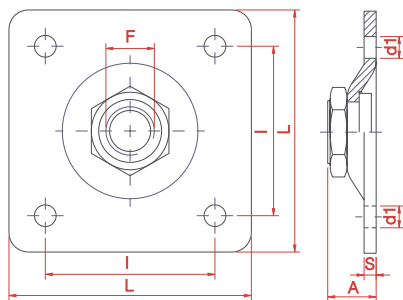
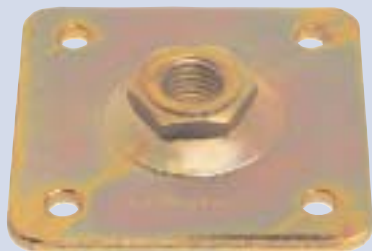
-  Gate plate and pin
-  Bodenplatte mit Zapfen
-  Plaque et pivot pour portail à battants
-  Placa y gazne para cancelas






ARTICOLO - ARTICLE		L x H x S	A	B	C			€	
Riferimento-Reference		mm			N°		x1		
P 20	CT 00 20 P0	70 X 60 X 15	30	75	13	20	20.2	4,50	
P 24	CT 00 24 P0	80 X 70 X 20	35	88	19	10	17.1	5,50	
Inox	P 20I	CI 00 20 P0	70 X 60 X 15	30	75	13	20	19.9	18,70





## Piastra registrabile per cardine

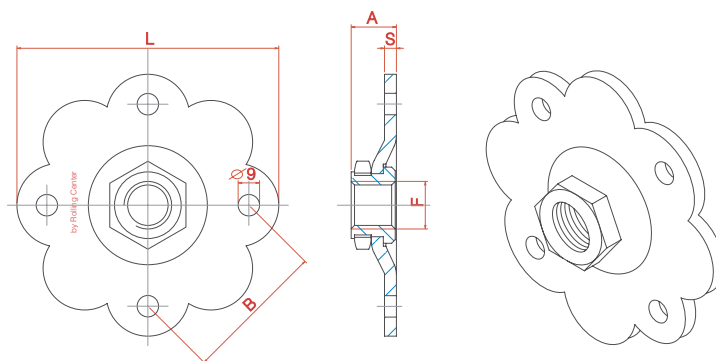
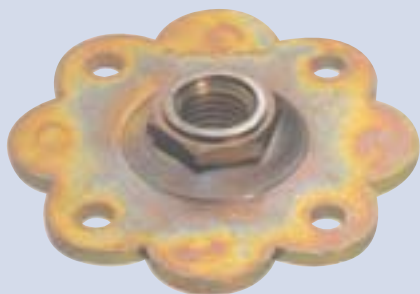
-  Adjustabled hinge plate
-  Einstellbare Flanschplatte fuer Anschweißtorband
-  Plaque réglable pour gond
-  Placa regulable para pernio





ARTICOLO - ARTICLE		L	F	S	A	I	d1			€
Riferimento-Reference		□	UNI	mm	mm	mm	mm	N°		x1
PR 20	PT 00 20 R0	100	M 20	5	20	70	9	20	8.7	4,60
PR 24	PT 00 24 R0	120	M 24	6	20	90	11	10	7.1	5,70





## Piastra a fiore registrabile per cardine serie ferro battuto

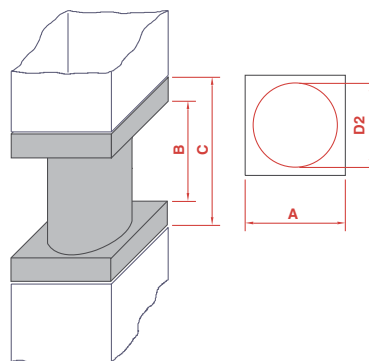
-  Adjustable flower plate for hinge wrought iron range
-  Regelbar- Blumenplatte Anschweißband Schmiedeiserne Tore
-  Plaque fleur réglable pour gond série fer forgé
-  Placa regulable flor para pernio serie hierro forjado






ARTICOLO - ARTICLE		L	F	S	A	B	d1			€
Riferimento-Reference			mm	mm	mm	mm	mm	N°		x1
PR 20 F	PT 00 20 R1	110	M 20	5	20	60	9	20	7.5	6,10
PR 24 F	PT 00 24 R1	130	M 24	6	20	65	11	10	6	7,20





## Tronchetto di giunzione montante cancello

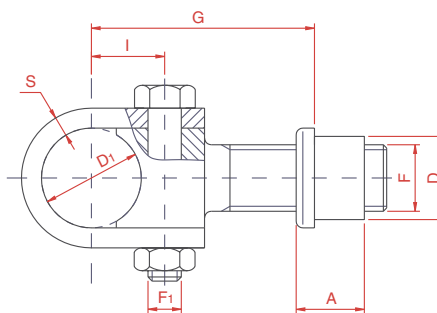
-  Upright gate joint element
-  Verbindungsstück
-  Axe bout de jonction pour montant de portail
-  Eje de giro del montante de la cancela






ARTICOLO - ARTICLE		D2	A	B	C			€
Riferimento-Reference		∅	mm	mm	mm	N°		x1
T 30	CT 00 30 T0	28.5	35	35	55	20	7.5	6,70
T 35	CT 00 35 T0	33.5	40	40	60	10	5.3	7,30
T 40	CT 00 40 T0	38.5	50	45	65	10	8.1	8,00





## Cardine a saldare

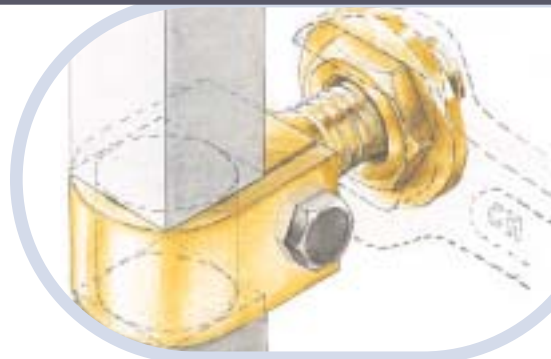
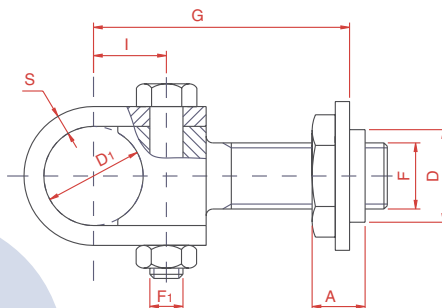
-  Hinge to be welded
-  Anschweißband
-  Gond à souder
-  Pernio para soldar






ARTICOLO - ARTICLE		D	D1	F	F1	G min/max	I	S	A			€
Riferimento-Reference		∅		UNI		mm				N°		x1
C 30	CT 00 30 C0	25	30	M 20	M 10	44-68	21	6	20.5	20	10.1	14,10
C 35	CT 00 35 C0	29	35	M 24	M 10	50-74	26	6	20.5	10	7.3	15,50
C 40	CT 00 40 C0	36	40	M 30	M 12	70-110	34	6	24	10	12.3	17,80





## Cardine a saldare registrabile

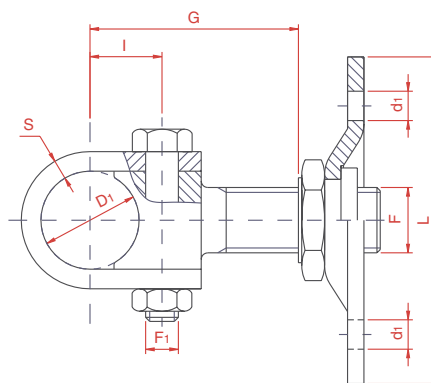
-  Adjustable hinge to be welded
-  Einstellbares Anschweißband
-  Gond réglable à souder
-  Pernio regulable para soldar






ARTICOLO - ARTICLE		D	D1	F	F1	G min/max	I	S	A			€
Riferimento-Reference		∅		UNI		mm				N°		x1
CR 30	CT 00 30 CR	28	30	M 20	M 10	50-78	21	6	16	20	10.7	15,30
CR 35	CT 00 35 CR	34	35	M 24	M 10	57-88	26	6	19	10	7.7	16,80
CR 40	CT 00 40 CR	43	40	M 30	M 12	70-110	34	6	24	10	13.6	21,80





## Cardine registrabile con piastra

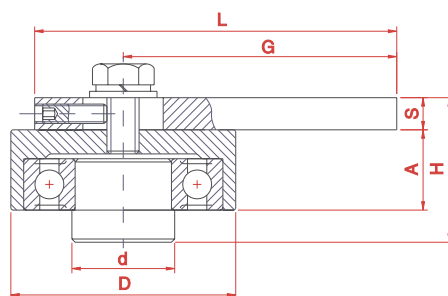
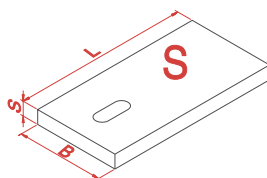
-  Adjustable hinge with plate
-  Einstellbares Torband mit Platte
-  Gond réglable avec plaque
-  Pernio regulable con placa






ARTICOLO - ARTICLE		L	D1	F	F1	G min/max	I	S	A	d1			€
Riferimento-Reference		□	∅	UNI		mm				∅	N°		x1
CR 30 P	CT 00 30 CP	100	30	M 20	M 10	39-63	21	6	20	9	10	8.9	18,40
CR 35 P	CT 00 35 CP	120	35	M 24	M 10	45-74	26	6	20	11	8	11.1	20,90





## Piastre girevoli per cancelli leggeri e pesanti

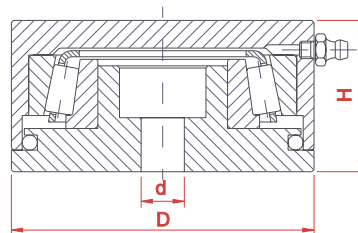
-  Rotating plate for light and heavy gates
-  Oberes Drehlager unteres Drucklager
-  Plaque tournante pour portail léger et lourd
-  Placa giratoria para cancelas livianas y pesadas






ARTICOLO - ARTICLE		D	d	A	H	B	L	S	G	PORTATA CAPACITY				
Riferimento-Reference		mm												
PG 50 S	CT 00 50 DS	50	20	20	38	40	80	8	52-64	600	10	5	21,20	
PG 70 S	CT 00 70 DS	70	32	25	45	60	120	10	85-100	1000	10	12.7	28,00	
<i>Inox</i>	PG 70 SI	CI 00 70 DS	70	32	25	45	60	120	8	85-100	1000	10	12.7	65,20





## Piastre girevoli per cancelli leggeri e pesanti

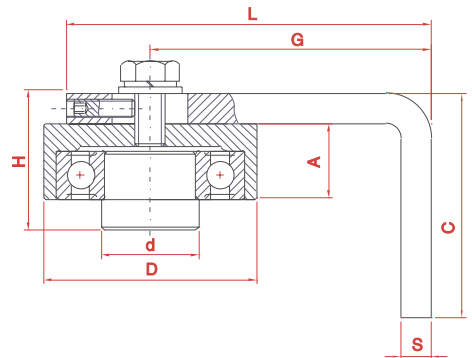
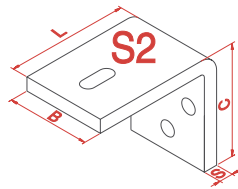
-  Rotating plate for light and heavy gates
-  Oberes Drehlager unteres Drucklager
-  Plaque tournante pour portail léger et lourd
-  Placa giratoria para cancelas livianas y pesadas






ARTICOLO - ARTICLE		D	d	H	PORTATA CAPACITY				
Riferimento-Reference		mm							
PG 50 I	CT 00 50 DI	50	8	30	1000	10	4	21,20	
PG 70 I	CT 00 70 DI	70	10	35	2500	10	8.7	27,00	
<i>Inox</i>	PG 70 II	CI 00 70 DI	70	10	35	2500	10	8.4	65,20





## Piastre girevoli con piastra di fissaggio per cancelli leggeri e pesanti

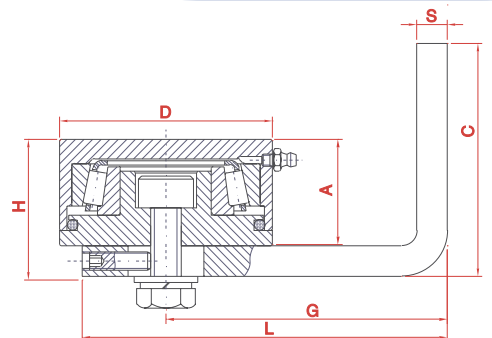
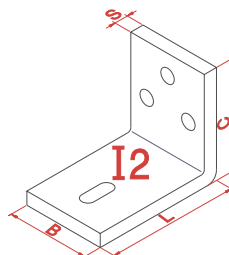
-  Rotating plate with fixing plate
-  Oberes Drehlager untere Druklager mit Winkelbefestigung
-  Plaque tournante avec plaque de fixation
-  Placa giratoria con placa de fijación superior






ARTICOLO - ARTICLE		D	d	A	H	B	L	C	S	G <sub>min/max</sub>	PORTATA CAPACITY				
Riferimento-Reference		mm													
PG 50 S2	CT 00 50 LS	50	20	20	38	40	80	70	8	52-64	400	10	6.4	27,40	
PG 70 S2	CT 00 70 LS	70	32	25	45	60	120	90	10	85-100	800	10	14.9	34,20	

## Piastre girevoli con piastra di fissaggio per cancelli leggeri e pesanti

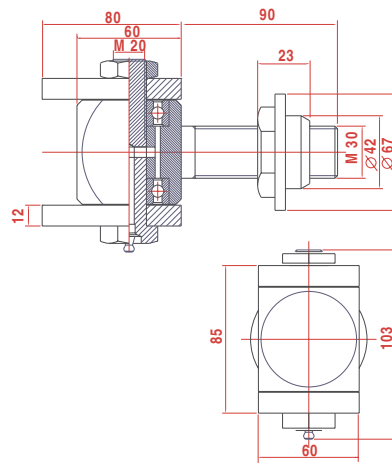
-  Rotating plate with fixing plate
-  Oberes Drehlager untere Druklager mit Winkelbefestigung
-  Plaque tournante avec plaque de fixation
-  Placa giratoria con placa de fijación inferior



ARTICOLO - ARTICLE		D	d	A	H	B	L	C	S	G <sub>min/max</sub>	PORTATA CAPACITY				
Riferimento-Reference		mm													
PG 50 I2	CT 00 50 LI	50	8	30	30	40	80	70	8	52-64	400	10	7.5	27,40	
PG 70 I2	CT 00 70 LI	70	32	35	35	60	120	90	10	85-100	800	10	16.8	34,20	

## Cardini per cancelli ad ante pesanti con due cuscinetti e perno ingrassatore

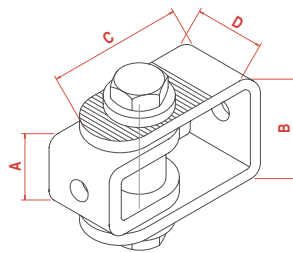
- Hinge for heavy gates with two bearings and lubricating pin
- Scharniere mit 2 Lagern und Stifte
- Gond pour portail très lourd avec 2 roulements et graisseur
- Pernio para cancela de hoja pesada con dos cojinetes y ingrassador



ARTICOLO - ARTICLE	PORTATA CAPACITY			€
Riferimento-Reference		N°		x1
CR 60 CT 00 60 R0	680	2	6	72,30

## Cardine a cavalletto regolabile

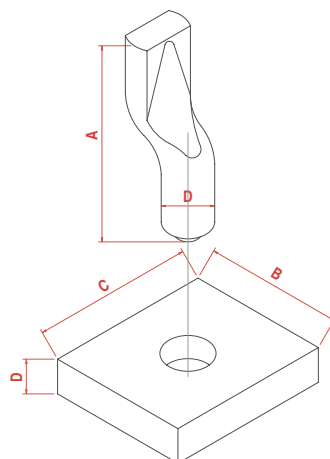
- Adjustable staple hinge
- Regelbar. Halter-Anschweissband
- Charnière gond réglable avec étrier
- Pernio con caballete regulable



ARTICOLO - ARTICLE	A	B	C	D			€
Riferimento-Reference	mm				N°		x1
131 P CZ 30 45 P0	30	45	64-70	30	10	4.1	7,20
131 G CZ 45 60 G0	45	60	64-73	35	10	5.6	8,80

## Piastra e perno inferiore

- Lower plate and pin
- Platte mit Zapfen
- Plaque et pivot inférieur
- Placa y pernio inferior

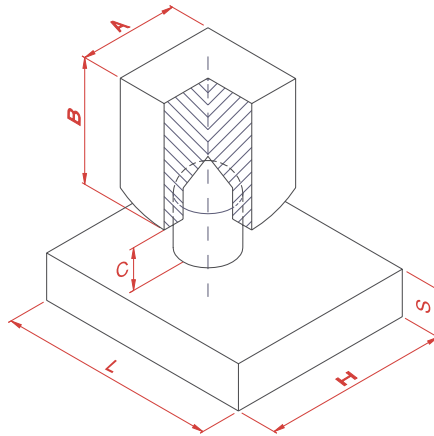


ARTICOLO - ARTICLE	A	B	C	D	Ø			€
Riferimento-Reference	mm					N°		x1
132 P CT 63 60 20	89	63	60	15	20	10	6.2	5,60
132 G CT 63 60 24	96	60	60	20	24	10	8.6	8,20



## Piastra e perno inferiore

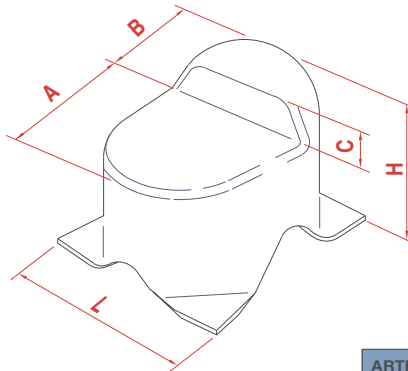
- Lower plate and pin
- Platte mit Zapfen
- Plaque et pivot inférieur
- Placa y pernio inferior



ARTICOLO - ARTICLE	L x H x S	A	B	C			€
Riferimento-Reference	mm				N°		x1
P 35 CT 70 60 01	70 X 60 X 15	35	40	11	20	18.3	5,20
P 40 CT 80 70 01	80 X 70 X 20	40	40	19	10	14.3	7,00

## Fermo d'arresto per cancelli a due ante tropicalizzato

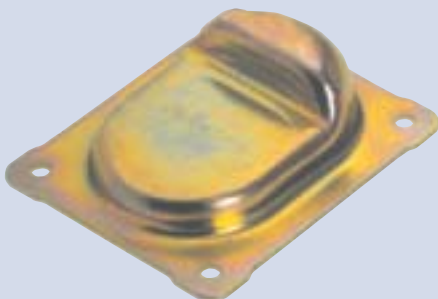
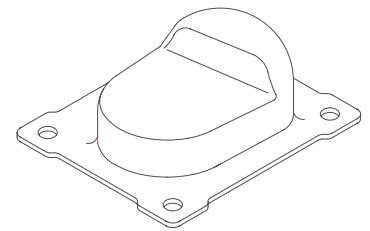
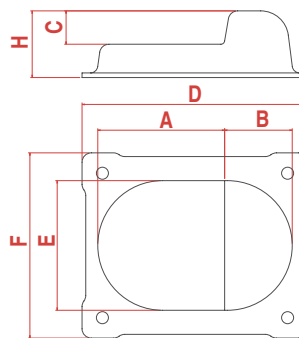
- Galvanised gate stop with two leas
- End-Sperren fuer 2-Türige Tore
- Butée zinguée d'arrêt central pour portail à battants
- Tope cincado para cancelas batientes de 2 hojas



ARTICOLO - ARTICLE	L	H	A	B	C			€
Riferimento-Reference	mm				N°		x1	
F 105 FT 92 77 00	92	77	63	35	20	20	7.3	3,10





## Fermo d'arresto con base per cancelli a due ante zincato

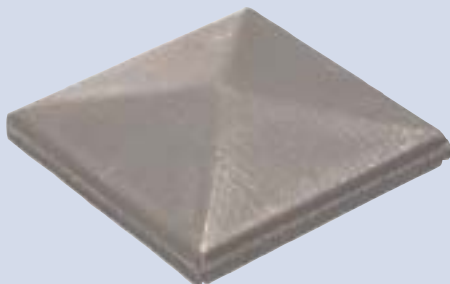
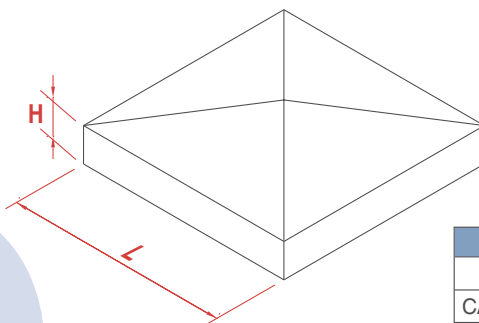
- Gate stop for 2 leaf-gates
- End-Sperren fuer 2-Türige Tore
- Butée d'arrêt central pour portail à 2 battants à visser
- Tope para cancelas batientes de 2 hojas para atornillar






ARTICOLO - ARTICLE	A	B	C	D	E	F	H			€
Riferimento-Reference	mm							N°		x1
F 105 BP FT 10 36 00	70	35	18	122	70	100	36	20	6	4,60
F 105 BG FT 13 40 00	88	42	20	157	90	130	40	10	5	3,90





## Copricolonna quadro grezzo con bordo

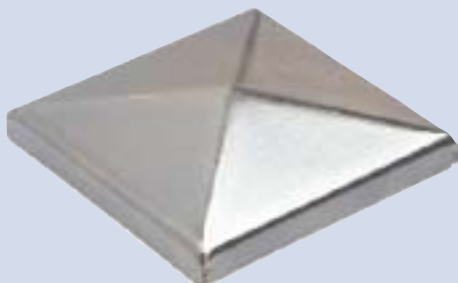
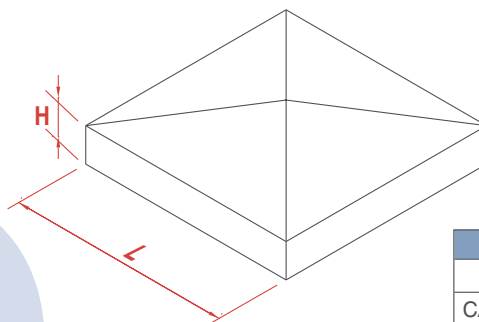
-  Welding square cap with flanges – black
-  Anschweißbare Abdeckkappen, roh
-  Chapeau noir avec bords à souder sur tube carré
-  Cubrecolonna cuadrada non cincado






ARTICOLO - ARTICLE		L	H			€
Riferimento-Reference		mm	N°		x1	
CAP 3G	PG 30 07QX	30	7	100	3.1	0,36
CAP 4G	PG 40 07QX	40	7	100	4.7	0,36
CAP 5G	PG 50 08QX	50	8	50	3.3	0,40
CAP 6G	PG 60 08QX	60	8	50	4.3	0,44
CAP 8G	PG 80 08QX	80	8	50	7	0,61
CAP 10 G	PG 10 09QX	100	9	50	10.3	0,90
CAP 12 G	PG 12 11QX	120	11	20	5.5	1,11
CAP 15 G	PG 15 12QX	150	12	10	4.2	1,90
CAP 20 G	PG 20 14QX	200	14	8	7.6	4,15





## Copricolonna quadro zincato con bordo

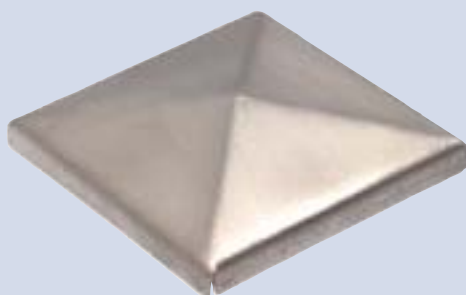
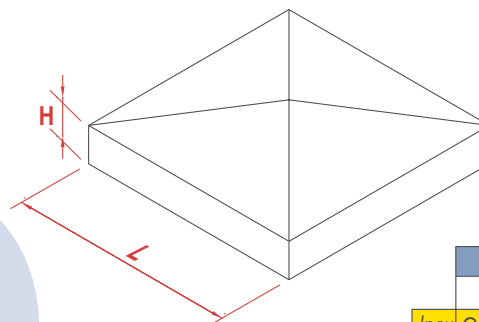
-  Welding square cap with flanges – galvanized
-  Anschweißbare Abdeckkappen, gelb verzinkt
-  Chapeau zingué avec bords à souder sur tube carré
-  Cubrecolonna cuadrada cincado






ARTICOLO - ARTICLE		L	H			€
Riferimento-Reference		mm	N°		x1	
CAP 3Z	PZ 30 07 Q0	30	7	100	3.1	0,36
CAP 4Z	PZ 40 07 Q0	40	7	100	4.7	0,36
CAP 5Z	PZ 50 08 Q0	50	8	50	3.3	0,40
CAP 6Z	PZ 60 08 Q0	60	8	50	4.3	0,44
CAP 8Z	PZ 80 08 Q0	80	8	50	7	0,61
CAP 10 Z	PZ 10 09 Q0	100	9	50	10.3	0,90
CAP 12 Z	PZ 12 11 Q0	120	11	20	5.5	1,11
CAP 15 Z	PZ 15 12 Q0	150	12	10	4.3	1,90
CAP 20 Z	PZ 20 14 Q0	200	14	8	7.6	4,15





## Copricolonna quadro inox con bordo

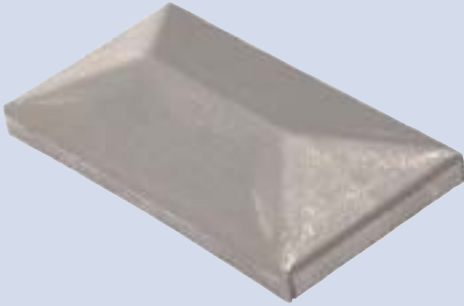
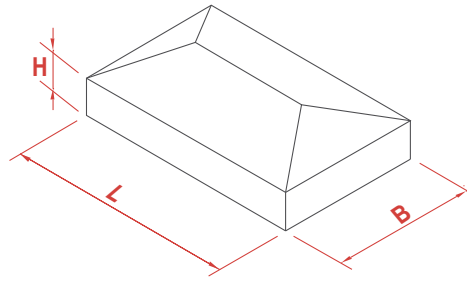
-  Welding square cap with flanges – stainless steel
-  Anschweißbare Abdeckkappen, Edelstahl
-  Chapeau inox avec bords à souder sur tube carré
-  Cubrecolonna cuadrada de acero inoxidable



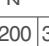


ARTICOLO - ARTICLE		L	H			€
Riferimento-Reference		mm	N°		x1	
Inox CAP 3I	PI 30 07 Q0	30	7	100	2.7	1,40
CAP 4I	PI 40 07 Q0	40	7	100	3.9	1,60
CAP 5I	PI 50 08 Q0	50	8	50	3.6	1,85
CAP 6I	PI 60 08 Q0	60	8	50	3.7	2,00
CAP 8I	PI 80 08 Q0	80	8	50	6.1	2,60
CAP 10 I	PI 10 09 Q0	100	9	50	6.5	3,60
CAP 12 I	PI 12 11 Q0	120	11	20	4.9	4,80
CAP 15 I	PI 15 12 Q0	150	12	10	4.3	6,00





## Copricolonna rettangolare grezzo con bordo

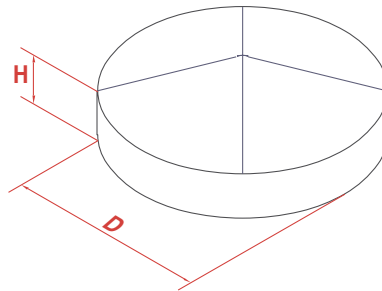
-  Welding rectangular cap with flange – black
-  Anschweißbare Abdeckkappen mit flansch fuer Rechteckrohre, roh
-  Chapeau noir avec bords à souder sur tube rectangulaire
-  Cubrecolumna rectangular non cincado



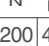


ARTICOLO - ARTICLE		B	L	H			€
Riferimento-Reference		mm			N°		x1
CAP 1RG	PG 20 30 RX	20	30	8	200	3.8	0,35
CAP 2RG	PG 20 40 RX	20	40	8	200	4.6	0,36
CAP 3RG	PG 30 50 RX	30	50	8	100	3.2	0,40
CAP 4RG	PG 30 60 RX	30	60	8	100	3.7	0,45
CAP 5RG	PG 40 60 RX	40	60	8	100	5.1	0,60
CAP 6RG	PG 40 80 RX	40	80	8	50	3.4	0,70
CAP 7RG	PG 50 10 RX	50	100	8	40	3.5	0,90





## Copricolonna tondo grezzo con bordo

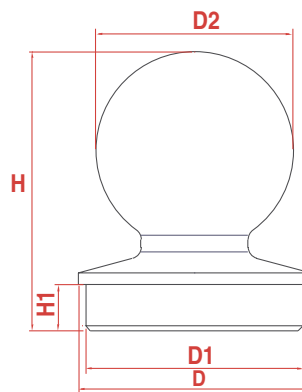
-  Welding round cap with flange – black
-  Anschweißbare Rundekappen mit Flansch, roh
-  Chapeau noir avec bords à souder sur tube rond
-  Cubrecolumna circular non cincado



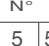


ARTICOLO - ARTICLE		D	H			€
Riferimento-Reference		mm		N°		x1
CAP 1TG	PG 30 11 TX	30	11	200	4.6	0,36
CAP 2TG	PG 33 11 TX	33	11	200	4.7	0,36
CAP 3TG	PG 42 11 TX	42	11	100	3.9	0,40
CAP 4TG	PG 48 13 TX	48	13	100	4.8	0,42
CAP 5TG	PG 60 14 TX	60	14	50	3.6	0,60
CAP 6TG	PG 76 14 TX	76	14	30	3.0	0,70
CAP 7TG	PG 90 14 TX	90	14	20	2.6	0,80
CAP 8TG	PG 11 14 TX	101	14	20	3.0	1,10
CAP 9TG	PG 12 14 TX	114	14	20	3.8	1,50

## Copricolonna a sfera in acciaio cromato

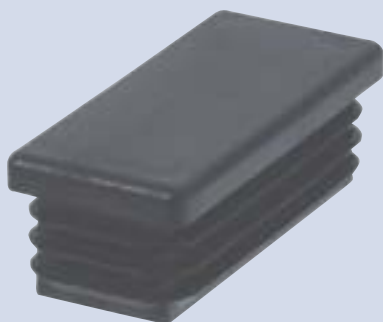
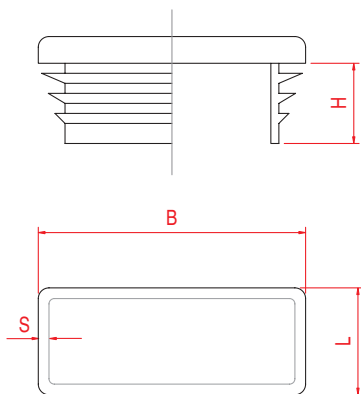
-  Spherical cap in chromated steel
-  Anschweißbare Abdeckkappe in Kugelform verchromt
-  Chapeau à sphère en acier chromé
-  Cubrecolumna esferica en acero cromato







ARTICOLO - ARTICLE		D	D1	D2	H	H1			€
Riferimento-Reference		mm					N°		x1
SF 60	PC 60 85 00	60	55	50	85	20	5	5.5	22,10
SF 76	PC 76 95 00	76	71	65	95	20	4	8	26,60
SF 102	PC 10 12 00	102	97	90	120	20	2	9.5	31,00





## Copricolonna in nylon per tubi rettangolari

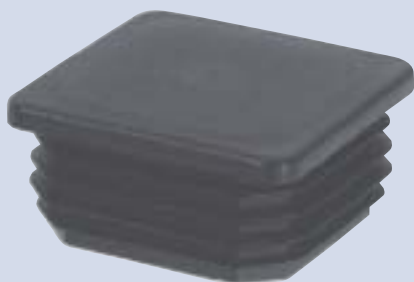
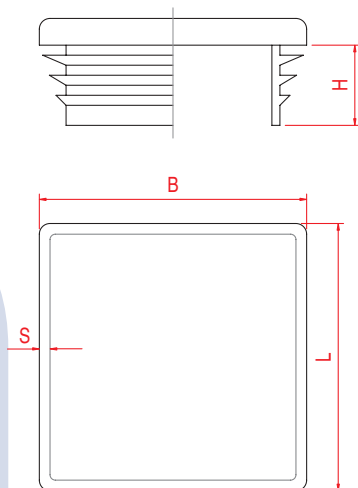
-  Plastic cap for rectangular pipes
-  Plastik Deckel Rechteck
-  Couvercle plastique rectangulaire
-  Cubrecolumna de nylon







ARTICOLO - ARTICLE		H	PER TUBI					
Riferimento-Reference		mm	B	L	S	N°		x1
CAP1RN	PN2010R0	12	20	10	1.5-2	100	0.150	0,12
CAP2RN	PN2515R0	12	25	15	1.5-2	100	0.250	0,15
CAP3RN	PN3010R0	12	30	10	1.1-5	100	0.250	0,17
CAP4RN	PN3015R0	12	30	15	1-2.5	100	0.350	0,18
CAP5RN	PN3020R0	12	30	20	1.5-2	80	0.600	0,20
CAP6RN	PN3020R1	14	30	20	3	80	0.500	0,20
CAP7RN	PN3025R0	13	30	25	1.5	50	0.600	0,20
CAP8RN	PN4010R0	13.5	40	10	1.5-2	100	0.600	0,33
CAP9RN	PN4015R0	12	40	15	1.5-2	80	0.500	0,25
CAP10RN	PN4020R0	14	40	20	1-2	50	0.600	0,26
CAP11RN	PN4020R1	14.5	40	20	3	50	0.700	0,36
CAP12RN	PN4025R0	13.5	40	25	1-3	50	0.700	0,33
CAP13RN	PN4030R0	14	40	30	1-3	100	1.000	0,36
CAP14RN	PN4030R1	14	40	30	3	100	0.900	0,36
CAP15RN	PN5020R0	13.5	50	20	1-3	100	0.800	0,40
CAP16RN	PN5025R0	13.5	50	25	1.5-2.5	100	0.800	0,40
CAP17RN	PN5030R0	14	50	30	1.5-2	100	0.900	0,41
CAP18RN	PN5030R1	14	50	30	3	100	1.000	0,51
CAP19RN	PN5034R0	14	50	34	1-3.5	50	1.200	0,45
CAP20RN	PN5040R0	13	50	40	1.5-2.5	50	0.750	0,53
CAP21RN	PN6020R0	13.5	60	20	1-3	100	0.900	0,53
CAP22RN	PN6025R0	15	60	25	1-2.5	50	0.600	0,60
CAP23RN	PN6030R0	14.2	60	30	1.5-2	50	0.700	0,60
CAP24RN	PN6040R0	14.2	60	40	1-3	50	0.750	0,76
CAP25RN	PN6040R1	18	60	40	4-5	50	0.950	1,45
CAP26RN	PN7025R0	18	70	25	1.5-2	50	0.800	0,90
CAP27RN	PN7030R0	18	70	30	1.5-2	50	0.900	0,92
CAP28RN	PN7040R0	18	70	40	1.5-2	50	1.000	1,10
CAP29RN	PN7040R1	18	70	40	2-5	50	1.050	1,30
CAP30RN	PN8020R0	18	80	20	1.5-2	50	0.850	0,90
CAP31RN	PN8030R0	18	80	30	1-2.5	50	0.800	0,92
CAP32RN	PN8040R0	18	80	40	1-3	50	0.840	1,00
CAP33RN	PN8040R1	15	80	40	3.2-4	40	1.230	2,20
CAP34RN	PN8050R0	18	80	50	2-4	30	0.630	2,10
CAP35RN	PN8060R0	25	80	60	2.5-3	20	0.750	2,20
CAP36RN	PN8060R1	15	80	60	5	20	0.700	3,03
CAP37RN	PN1040R0	13	100	40	2	20	0.620	2,55
CAP38RN	PN1040R1	13	100	40	2-4	20	0.700	2,55
CAP39RN	PN1050R0	24	100	50	3.2-5	40	0.950	2,76
CAP40RN	PN1230R0	16	120	30	1.5-2	50	0.750	2,75
CAP41RN	PN1240R0	11.5	120	40	3-5	20	0.830	2,94
CAP42RN	PN1260R0	20	120	60	2-4	20	0.590	3,15
CAP44RN	PN1280R0	25	120	80	2-3	10	0.830	4,31
CAP45RN	PN1480R0	14	140	80	4	10	0.700	5,49
CAP46RN	PN1510R0	27	150	100	3-8	10	0.910	7,60





## Copricolonna in nylon per tubi quadri

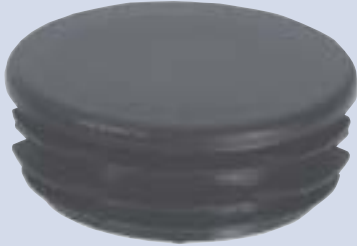
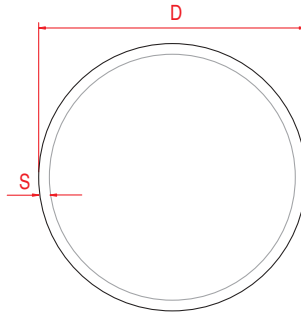
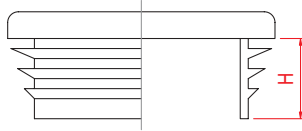
-  Plastic cap for square pipes
-  Plastik Deckel Quadrat
-  Couvercle plastique carré
-  Cubrecolumna de nylon





ARTICOLO - ARTICLE		H	PER TUBI					
Riferimento-Reference		mm	B	L	S	N°		x1
CAP15TQ	PN1511Q0	11	15	15	1.5-2	100	0.150	0,10
CAP20TQ	PN2012Q0	12	20	20	1-3	100	0.250	0,12
CAP30TQ	PN3012Q0	12	30	30	2.5-5	50	0.600	0,30
CAP31TR	PN3011Q0	11	30	30	1-2.5	50	0.600	0,30
CAP40TQ	PN4014Q0	14	40	40	1-3	100	0.900	0,50
CAP50TQ	PN5015Q0	15	50	50	2.6-4	50	1.200	0,70
CAP60TQ	PN6015Q0	15	60	60	1.5-3.5	30	0.620	1,10
CAP70TQ	PN7018Q0	18	70	70	2-4	30	0.700	1,80
CAP80TQ	PN8016Q0	16	80	80	2-4	20	0.550	2,10
CAP90TQ	PN9025Q0	25	90	90	2-5	10	0.670	3,50
CAP11TQ	PN1028Q0	28	100	100	1-4	10	1.000	4,00
CAP12TQ	PN1226Q0	26	120	120	2.5-5	10	0.900	6,15

## Copricolonna in nylon per tubi rotondi

-  Plastic cap for round pipes
-  Plastik deckel rund
-  Couvercle plastique rond
-  Cubrecolumna de nylon para tubos redondas



ARTICOLO - ARTICLE		H	PER TUBI			
Riferimento-Reference		mm	D	S	N°	x1
CAP1TN	PN1010T0	10.8	10	1-2	50	0,080
CAP2TN	PN1509T0	9.2	15	1-2	50	0,240
CAP3TN	PN2011T0	11.4	20	1-2	50	0,300
CAP4TN	PN2511T0	11.3	25	1-3	100	0,500
CAP5TN	PN3011T0	11.6	30	1-2	100	0,500
CAP5/1TN	PN3211T0	12	32	1-2	50	0,530
CAP6TN	PN4011T0	11.3	40	1-3	100	0,693
CAP6/1TN	PN4211T0	11.5	42	1-2	100	0,710
CAP6/2TN	PN4811T0	11.5	48	1-2	100	0,728
CAP7TN	PN5011T0	11.2	50	1-2	100	0,900
CAP8TN	PN6011T0	17.8	60	1.5-3	50	0,993
CAP9TN	PN7021T0	21.2	70	2-4.5	30	0,435
CAP10TN	PN7522T0	22.2	76	1.6-4	20	0,500
CAP11TN	PN9019T0	19.9	90	2.5-5	20	0,500
CAP12TN	PN1020T0	20.2	102	2.4	10	0,634
CAP12/1TN	PN1000T0	28.5	100	2-4.5	10	0,600
CAP13TN	PN1100T0	28.5	110	2-4.5	10	0,650



## **Cardini**

-  Hinges
-  Torbänder
-  Gonds
-  Pernios





**pag.6-18**

## **Cerniere·Catenacci**

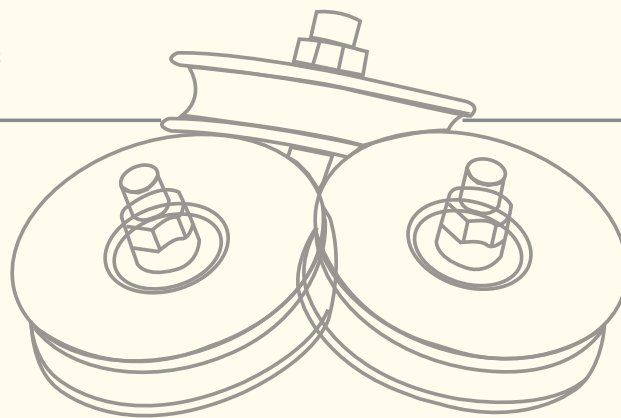
-  Hinges - Bolts
-  Scharniere - Riegel
-  Charnières - Verrous
-  Bisagras - Cerrojos

**pag.19-29**

## **Ruote cremagliere e guide**

-  Wheels/racks/guides
-  Laufrollen/Schienen
-  Roues/Crémaillères/rails
-  Ruedas, cremalleras y guías

**pag.30-52**







## **Piastre e rulli guida**

-  Rollers guide
-  Führungsrollen
-  Plots de guidage
-  Placas y Rodillos





**pag.53-57**

## **Accessori per portoni·Cuscinetti**

-  Accessories for sliding and folding doors and bearings
-  Zubehör fuer falt-und Schiebetore, Lagern
-  Accessoires pour portes coulissantes et accordéon
-  Accesorios para puertas correderas y plegables

**pag.58-93**

## **Carrelli autoportanti**

-  Cantilever gate carriages
-  Wagen fuer freitragende Schiebetore
-  Chariots pour portail autoportants
-  Carros para cancelas autoportantes

**pag.94-97**