











Carrelli per cancelli autoportanti

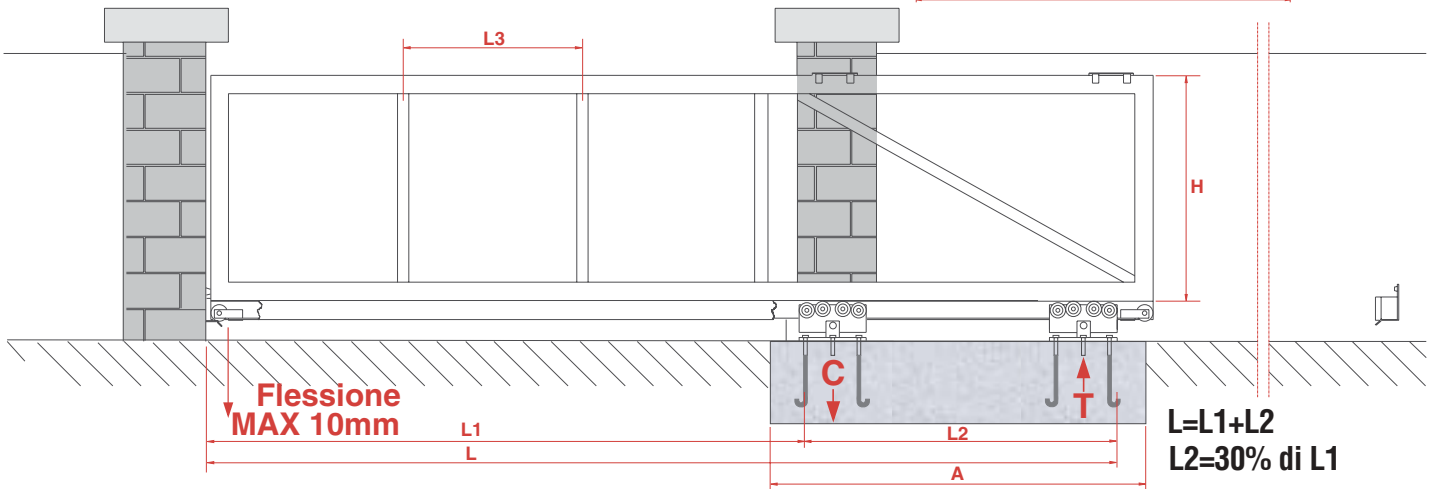
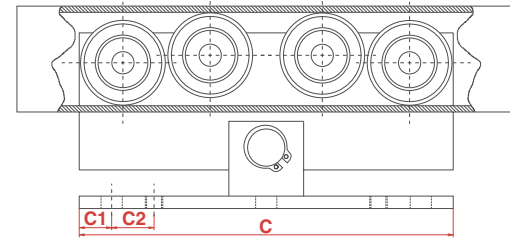
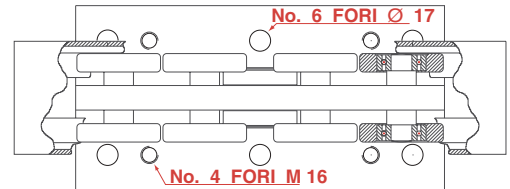
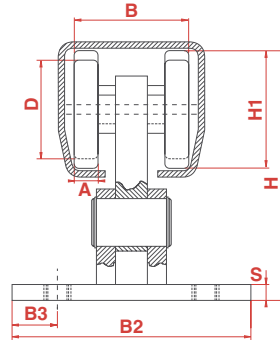
-  Cantilever gate carriage
-  Wagen fuer freitragende Schiebetore
-  Chariot pour portail autoportants
-  Carro para cancelas autoportantes





Carrelli per portoni

Carrello per cancelli autoportanti





-  Cantilever gate carriage
-  Wagen fuer freitragende Schiebetore
-  Chariot pour portail autoportant
-  Carros para cancelas autoportantes



ARTICOLO - ARTICLE		D	A	H	H1	S	B	B2	B3	C	C1	C2	L1	CAPACITY PORTATA	ABBINABILE COMBINING	N°	€	
Riferimento-Reference		mm											MAX ML			x1		
CA 4 RS	LT 00 80 80	70	15	162	74	10	72	150	28.5	300	25	35	6	600	GIPI 4 RG /GZ	2	17.5	118,20
CA 4 RMS	LT 01 20 80	120	30	246	130	15	99	200	28.5	470	25	35	15	1200	GIPI 4 RM /MG	1	44.6	182,60

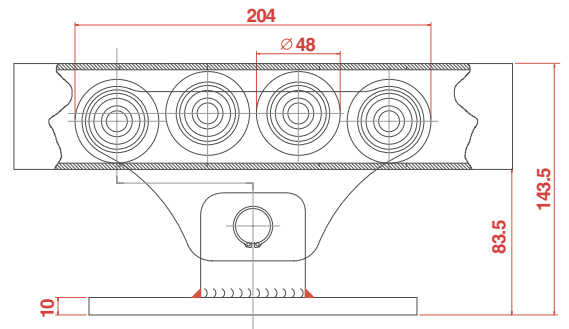
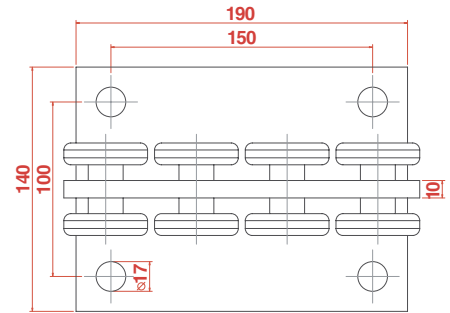
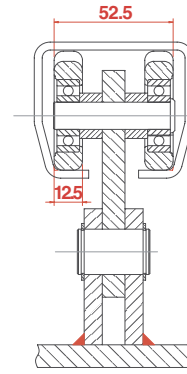


Cancello industriale autoportante lunghezza mt.15

-  Industrial Cantilever gate L. 15 m.
-  Industrie-Selbsttragend. Tor L. 15 M.
-  Portail industriel autoporté L. 15 mt.
-  Cancela industrial autoportante 15 metros de paso

Carrello basic per cancelli autoportanti

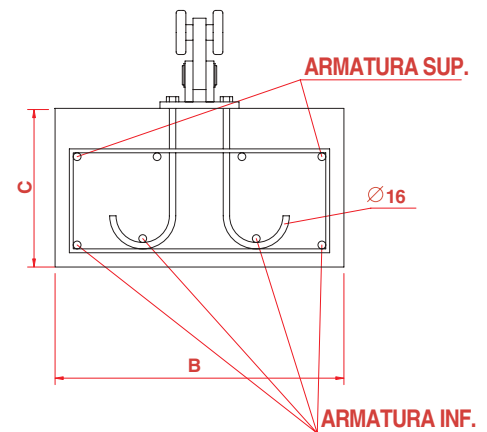
- Basic carriage for cantilever gates
- Basic Rollenapparat fuer freitragende Schiebtore
- Chariot basic pour portails autoportants
- Carro par cancelas autoportantes residenciales



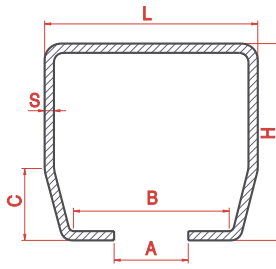
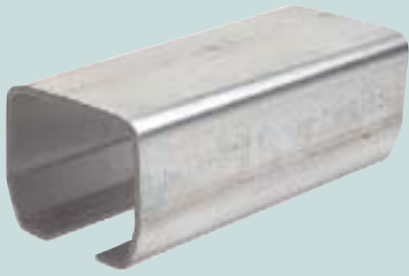
ARTICOLO - ARTICLE		L1	CAPACITY PORTATA	ABBINABILE COMBINING	N°		€
Riferimento-Reference		MAX ML					x1
CA 4 RPS	LT 00 50 80	4	450	GIPI 4 RP /RPZ	2	9.58	67,50

TABELLA DI CALCOLO

ABBINABILE COMBINING	CANCELLO								FONDAZIONE					
	L1	L2	H	L3	PESO CANCELLO	COMPRESS. C	TRAZIONE T	TRAZIONE x TIRANTE	A	B	C	PESO FONDAZIONE	ARMATURA	
	ML	ML	ML	ML	kg	kg	kg	kg	ML	ML	ML	kg	n°/mm INFER.	n°/mm SUPER.
BASIC	3	1	1	1	120	1450	850	250	2.2	0.6	0.4	1150	4 Ø12	4 Ø12
CA 4 RS	4	1.3	1	1	120	1900	1150	300	2.8	0.6	0.4	1500	4 Ø12	4 Ø12
	5	1.5	1	1.5	150	2650	1550	400	3.4	0.6	0.4	2300	4 Ø12	4 Ø12
	6	1.8	1	1.5	150	3100	1800	500	4	0.6	0.4	2750	4 Ø12	4 Ø12
	8	2.4	1	1.5	175	4500	2550	650	4.6	0.6	0.4	4250	7 Ø12	4 Ø12
CA 4 RMS	10	3	1	2	175	5450	3100	800	5.2	0.6	0.4	5350	6 Ø12	4 Ø12
	12	4	1	2	200	7300	4050	1050	5.8	0.8	0.5	7300	7 Ø12	4 Ø12
	14	4.2	1	2	200	8450	4650	1200	6.4	0.8	0.5	8500	9 Ø12	4 Ø12
	16	4.8	1	2	250	11800	6500	1650	7	0.8	0.6	12150	10 Ø18	4 Ø12



Carrelli per portoni



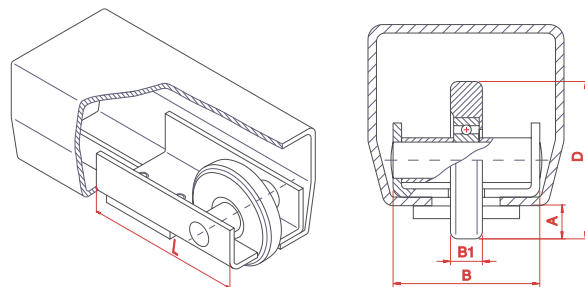
Guida per cancelli scorrevoli autoportanti

- Guide for sliding cantilever gates
- Profilschiene fuer freitragende Schiebetore
- Rail pour portail suspendu
- Guías para cancelas correderas autoportantes

TIPO TYPE	ARTICOLO - ARTICLE	ABBINABILE COMBINING	L	H	A	B	C	S	L1	DESCRIZIONE DESCRIPTION	FASCI SHEAFS	ML	mm	€	x1 ML
Riferimento-Reference		mm													
□	GIPI 4 RP 3 BG 70 60 03	CA 4 RPS	70	60	22	53	30	3.5	0/3 ML	GREZZO da ML 3	96	532	12,50		
	GIPI 4 RP 6 BG 70 60 00		70	60	22	53	30	3.5		GREZZO da ML 6	192	1065	12,50		
	GIPI 4 RPZ 3 BZ 70 60 03		70	60	22	53	30	3.5		ZINCATO da ML 3	96	532	16,00		
	GIPI 4 RPZ 6 BZ 70 60 00		70	60	22	53	30	3.5		ZINCATO da ML 6	192	1065	16,00		
□	GIPI 4 RG 3 BG 94 87 03	CA 4 RS	94	85	33	73	30	5	3/6 ML	GREZZO da ML 3	60	540	34,20		
	GIPI 4 RG 6 BG 94 87 00		94	85	33	73	30	5		GREZZO da ML 6	120	1080	34,20		
	GIPI 4 RGZ 3 BZ 94 87 03		94	85	33	73	30	5		ZINCATO da ML 3	60	540	38,70		
	GIPI 4 RGZ 6 BZ 94 87 00		94	85	33	73	30	5		ZINCATO da ML 6	120	1080	38,70		
□	GIPI 4 RM 3 BG 13 14 03	CA 4 RMS	136	143	38	104	55	6	6/12 ML	GREZZO da ML 3	45	968	54,50		
	GIPI 4 RM 6 BG 13 14 06		136	143	38	104	55	6		GREZZO da ML 6	90	1936	54,50		
	GIPI 4 RMZ 3 BZ 13 14 03		136	143	38	104	55	6		ZINCATO da ML 3	45	968	69,30		
	GIPI 4 RMZ 6 BZ 13 14 06		136	143	38	104	55	6		ZINCATO da ML 6	90	1936	69,30		

Ruota di sostegno

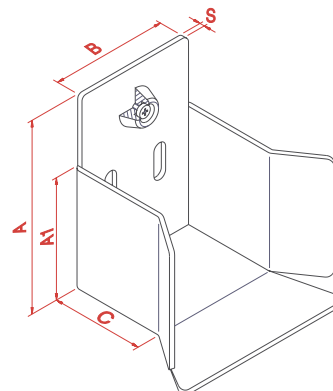
- Support wheel
- Stützrad
- Roue de support
- Ruedas de soporte con placa para atornillar



ARTICOLO - ARTICLE	B	B1	L	A	D	ABBINABILE COMBINING	N°	mm	€	x1
Riferimento-Reference		mm			∅	□				
41 B	LT 00 50 10	50	15	125	12	68	GIPI 4RP/PZ	10	10,2	15,20
41 P	LT 00 74 10	68	15	125	15	74	GIPI 4RG/GZ	10	12	15,80
41 G	LT 00 98 10	105	30	165	14	98	GIPI 4RM/MZ	2	6,5	27,40





Incontro

- Meeting point
- Fuehrungsendstück
- Butée
- Punto de recepción




ARTICOLO - ARTICLE	A	A1	B	C	S	ABBINABILE COMBINING	N°	mm	€	x1
Riferimento-Reference		mm				□				
50 B	FT 15 80 00	130	80	80	75	4	GIPI 4RP/PZ	2	2.4	15,40
50 P	FT 16 10 00	165	105	100	80	4	GIPI 4RG/GZ	5	8.4	16,00
50 G	FT 22 15 00	225	165	155	80	4	GIPI 4RM/MZ	1	2.8	22,80

Particolari eseguiti su richiesta

-  Accessories manufactured on request
-  Sonderanfertigungen auf Anfrage
-  Exemples de quelques réalisations effectuées sur demande
-  Accesorios especiales (con pedido)





Linea Inox


-  Stainless steel
-  Edelstahl Artikel
-  Gamme Inox
-  Linea estandard de acero inoxidable




 CATALOGO 04/02 - L'azienda si riserva in qualunque momento di apportare alla propria produzione modifiche e/o miglioramenti ritenuti necessari a suo insindacabile giudizio.

 CATALOGUE 04/02 - The Company has the right to modify or improve its products without any notice when necessary.

 KATALOG 04/02 - Die Firma behält sich das Recht vor, an ihrer Produktion jederzeit Änderungen und/oder fuer notwendig erachtete Verbesserungen nach eigenem Ermessen durchzuführen.

 CATALOGUE 04/02 - La Société se réserve le droit de modifier et/ou améliorer sans préavis ses produits.

 CATALOGO 04/02 - La empresa se reserva el derecho de modificar o mejorar sin preaviso sus productos.

Cardini

-  Hinges
-  Torbänder
-  Gonds
-  Pernios





pag.6-18

Cerniere·Catenacci

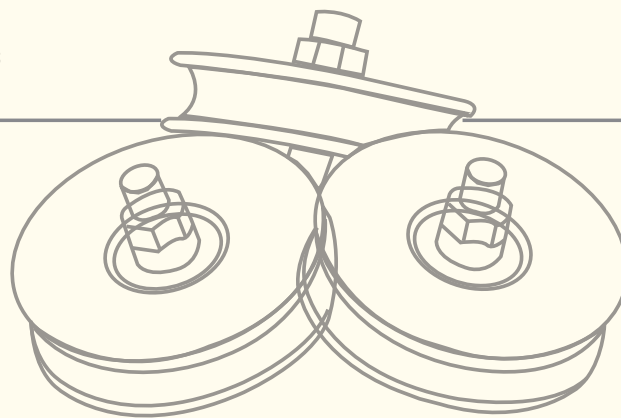
-  Hinges - Bolts
-  Scharniere - Riegel
-  Charnières - Verrous
-  Bisagras - Cerrojos

pag.19-29

Ruote cremagliere e guide

-  Wheels/racks/guides
-  Laufrollen/Schienen
-  Roues/Crémaillères/rails
-  Ruedas, cremalleras y guías

pag.30-52







Piastre e rulli guida

-  Rollers guide
-  Führungsrollen
-  Plots de guidage
-  Placas y Rodillos





pag.53-57

Accessori per portoni·Cuscinetti

-  Accessories for sliding and folding doors and bearings
-  Zubehör fuer falt-und Schiebetore, Lagern
-  Accessoires pour portes coulissantes et accordéon
-  Accesorios para puertas correderas y plegables

pag.58-93

Carrelli autoportanti

-  Cantilever gate carriages
-  Wagen fuer freitragende Schiebetore
-  Chariots pour portail autoportants
-  Carros para cancelas autoportantes

pag.94-97